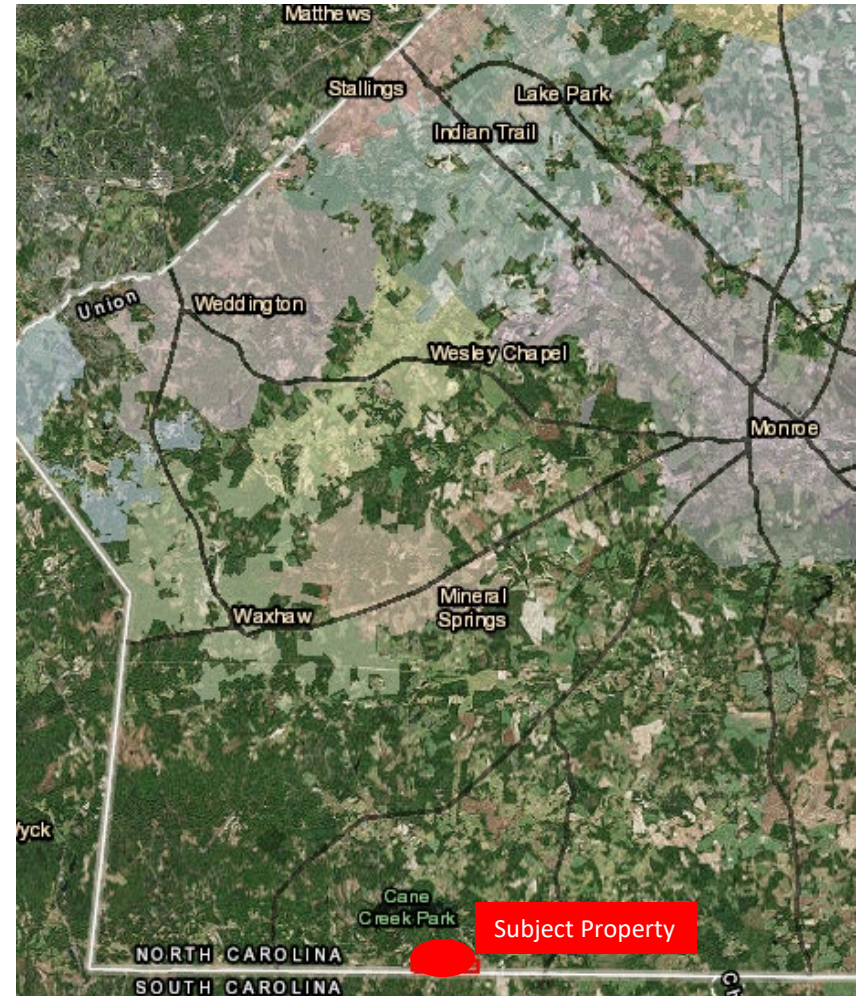


289 Acres Near Cane Creek – Union County

- 289 acres on the NC/SC border in Union County, NC
- Access via Rollins Road and Whispering Hollow Lane
- Rolling acreage with cleared pastures and wooded pockets and streambeds with pond. ([drone flyover](#))
- Conveniently located
 - 3 minutes to [Cane Creek Park](#)
 - Approximately 25-30 minutes to Weddington, Wesley Chapel, Indian Trail and Matthews
 - 3 minutes to [Meadow Wood Farm](#)
 - 20 minutes to [Andrew Jackson State Park](#) and Hwy 521
 - 15 minutes to Lancaster, SC
- List Price \$2,600,000



289 Acres Near Cane Creek – Union County

